

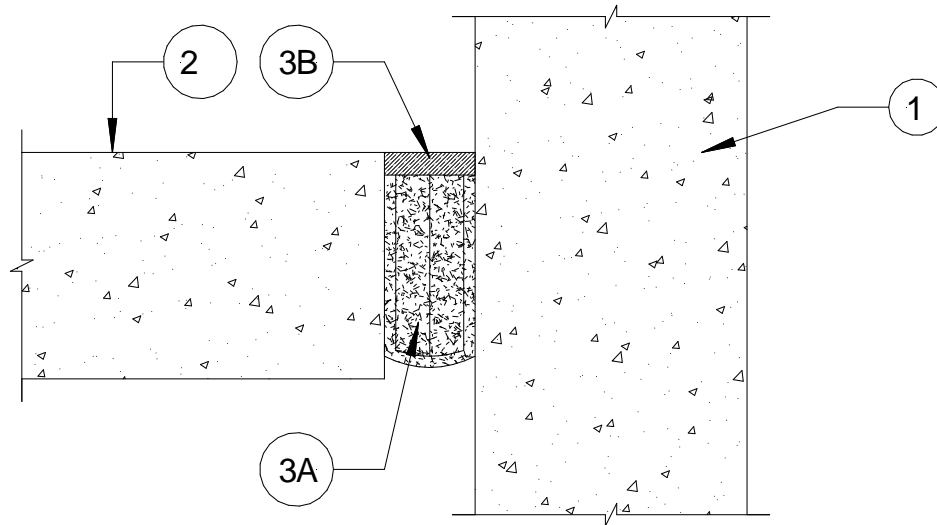


Backer Rod Mfg. Inc.

www.backerrod.com
Customer Service (800) 595 2950



UL System No. FW-S-0009
November 18, 2008
Assembly Rating – 4 Hr
Joint Width – 2 In. (51 mm) Maximum



1. **Wall Assembly** – Min 5-3/4 in. (146 mm) thick reinforced lightweight or normal weight (100 – 150 pcf or 1600-2400 kg/m³) structural concrete. Wall may also be constructed of any UL **Classified Concrete Blocks***

See **Concrete Blocks** (CATZ) category in the Fire Resistance Directory for names of manufacturers.

2. **Floor Assembly** – Min 5-3/4 in. (146 mm) thick steel-reinforced lightweight or normal weight (100 – 150 pcf or 1600-2400 kg/m³) structural concrete.
3. **Joint System** – Max separation between edge of floor and face of wall is 2 in. (51 mm). The joint system shall consist of the following:

- A. **Forming Material*** - Max 12 in. (305 mm) width of forming material shall be folded in half, compressed min 27 percent and installed into joint opening as a permanent form. Forming material to be recessed from top surface of the floor to accommodate the required thickness of fill material.

BACKER ROD MFG. INC. – ULTRA BLOCK®

- B. **Fill, Void or Cavity Material*** - Min 1/2 in. (13 mm) thickness of fill material applied within the joint, flush with top surface of the floor.

MOMENTIVE PERFORMANCE MATERIALS – PENSIL 300 or PENSIL 300 S/L SEALANTS

SPECIFIED TECHNOLOGIES INC – PENSIL 300, PENSIL 300 S/L, SPECSEAL SERIES SIL300 or SPECSEAL SERIES SIL300SL SEALANTS

*Bearing the UL Classification Mark