



Backer Rod Mfg. Inc.

www.backerrod.com
Customer Service (800) 595 2950



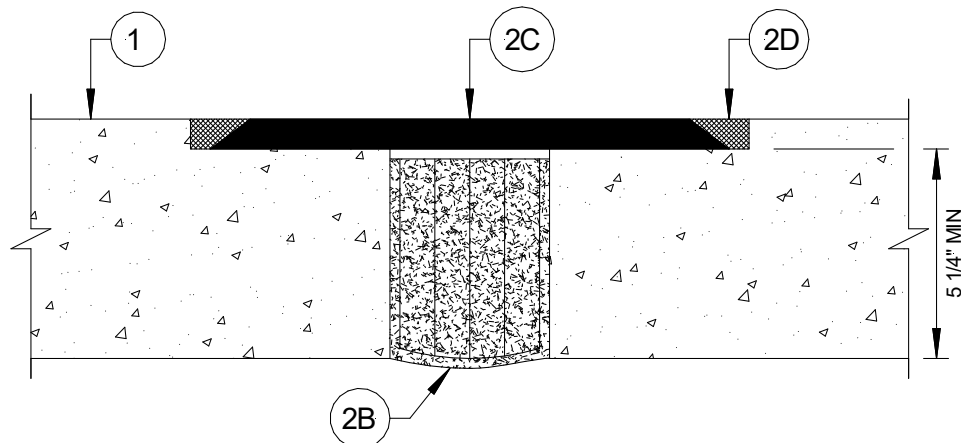
UL System No. WW-S-1007

July 03, 1997

Assembly Rating – 2 Hr

Joint Width – 4 In. Maximum

(Limited to Fire Exposure on Interior Surface Only)



1. **Wall Assembly** – Reinforced lightweight or normal weight (100-150 pcf) structural concrete having a min thickness of 5 1/4 in. at stepped-edges receiving Fill, Void or Cavity Material (Item 2C). Wall may also be constructed of any UL Classified **Concrete Blocks***.

See **Concrete Blocks** (CATZ) category in the Fire Resistance Directory for names of manufacturers.

2. **Joint System** – Max width of the joint is 4 in. The joint system shall consist of the following:
 - A. **Fill, Void or Cavity Material*** - (Not Shown) – Prior to the installation of the Forming Material (Item 2B), a nom 1/2 in. bead of caulk is applied along the edges of the joint, 2 in. from exterior surface of the wall.
 - B. **Forming Material*** - A nom 14 in. width of forming material shall be folded in half and firmly packed into opening as a permanent form. Forming material to be recessed 1-1/4 in. from exterior surface of wall. See manufacturer's installation instructions for size and configuration of forming material.

BACKER ROD MFG. INC. – ULTRA BLOCK®
 - C. **Fill, Void or Cavity Material*** - Prior to the installation of the premold into the joint, the stepped-surface of the concrete wall shall be treated with 2 component LymTal International, Inc. Primer 10 in accordance with the installation instructions accompanying the primer. Premold, max 12 in. wide min 3/4 in. deep, centered in the joint, such that it is spaced 1/2 in. from each stepped edge of concrete wall. When installed, the premold shall be flush with the exterior surface of the wall.

LYMTAL INTERNATIONAL INC – ISO-FLEX 880 PREMOLD
 - D. **Fill, Void or Cavity Material*** - Min 3/4 in. thickness of fill material applied within the joint, flush with exterior surface of wall.

LYMTAL INTERNATIONAL INC – ISO-FLEX 980 Nosing

* Indicates such products shall bear the UL or cUL Certification Mark for jurisdictions employing the UL or cUL Certification (such as Canada), respectively.